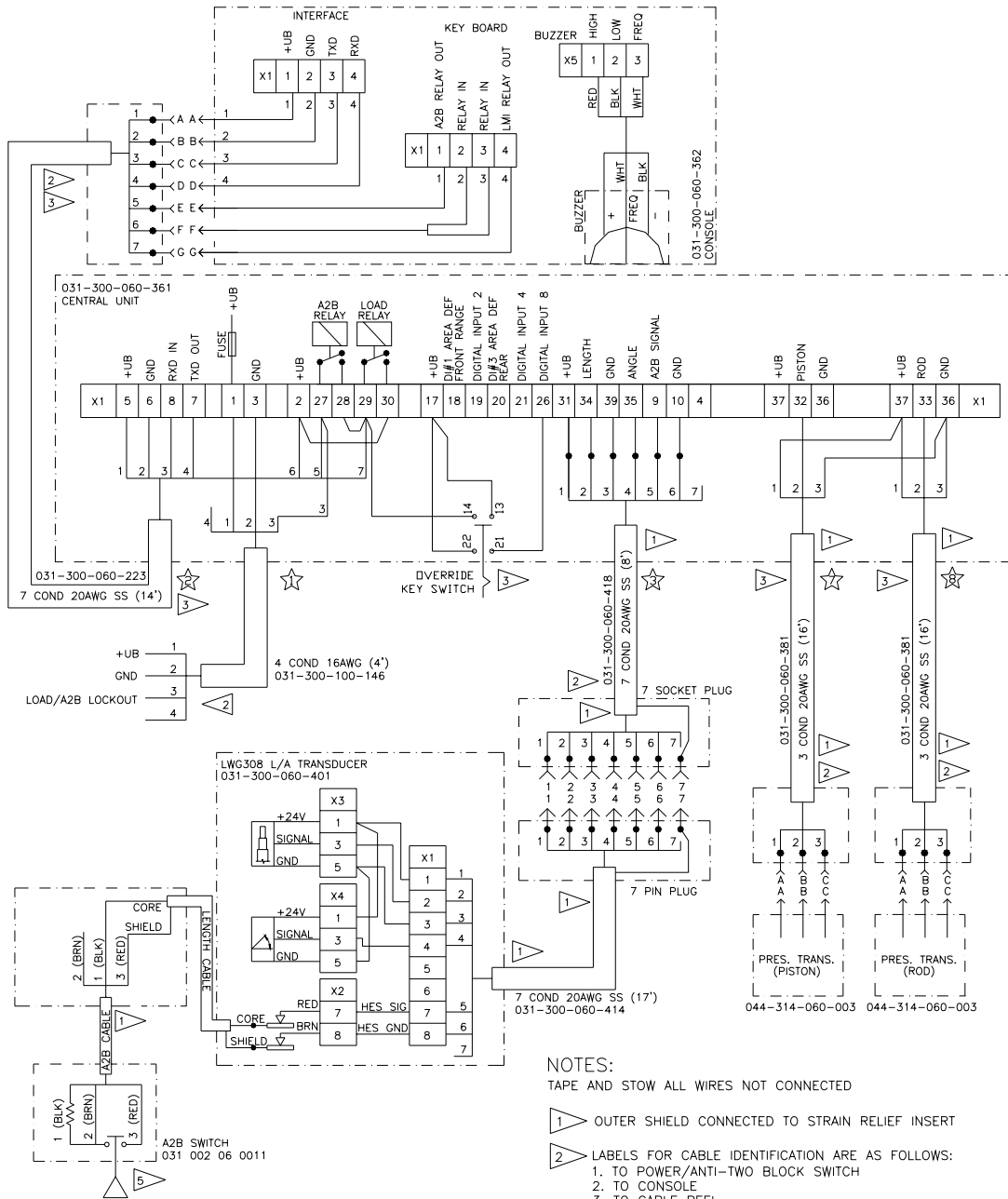


PAT HIRSCHMANN DS160 WIRING SCHEMATIC - 1

031-300-060-361 Central Unit



NOTES:

TAPE AND STOW ALL WIRES NOT CONNECTED

1 OUTER SHIELD CONNECTED TO STRAIN RELIEF INSERT

2 LABELS FOR CABLE IDENTIFICATION ARE AS FOLLOWS:

1. TO POWER/ANTI-TWO BLOCK SWITCH
2. TO CONSOLE
3. TO CABLE REEL
4. HOLE PLUG (NO LABEL REQUIRED)
5. MOISTURE DRAIN (NO LABEL REQUIRED)
6. HOLE PLUG (NO LABEL REQUIRED)
7. TO PISTON SIDE PRESSURE TRANSDUCER
8. TO ROD SIDE PRESSURE TRANSDUCER

STRAIN RELIEF POSITION NUMBER REFERENCE POSITION IN CENTRAL UNIT.

3 CABLE LENGTH SHOWN ON CABLE ASSEMBLIES ARE MEASURED FROM STRAIN RELIEF TO STRAIN RELIEF.

4 INNER SHIELD CUT AND INSULATED.

PAT HIRSCHMANN DS160 WIRING SCHEMATIC - 2

031-300-060-690 Central Unit

NOTES:

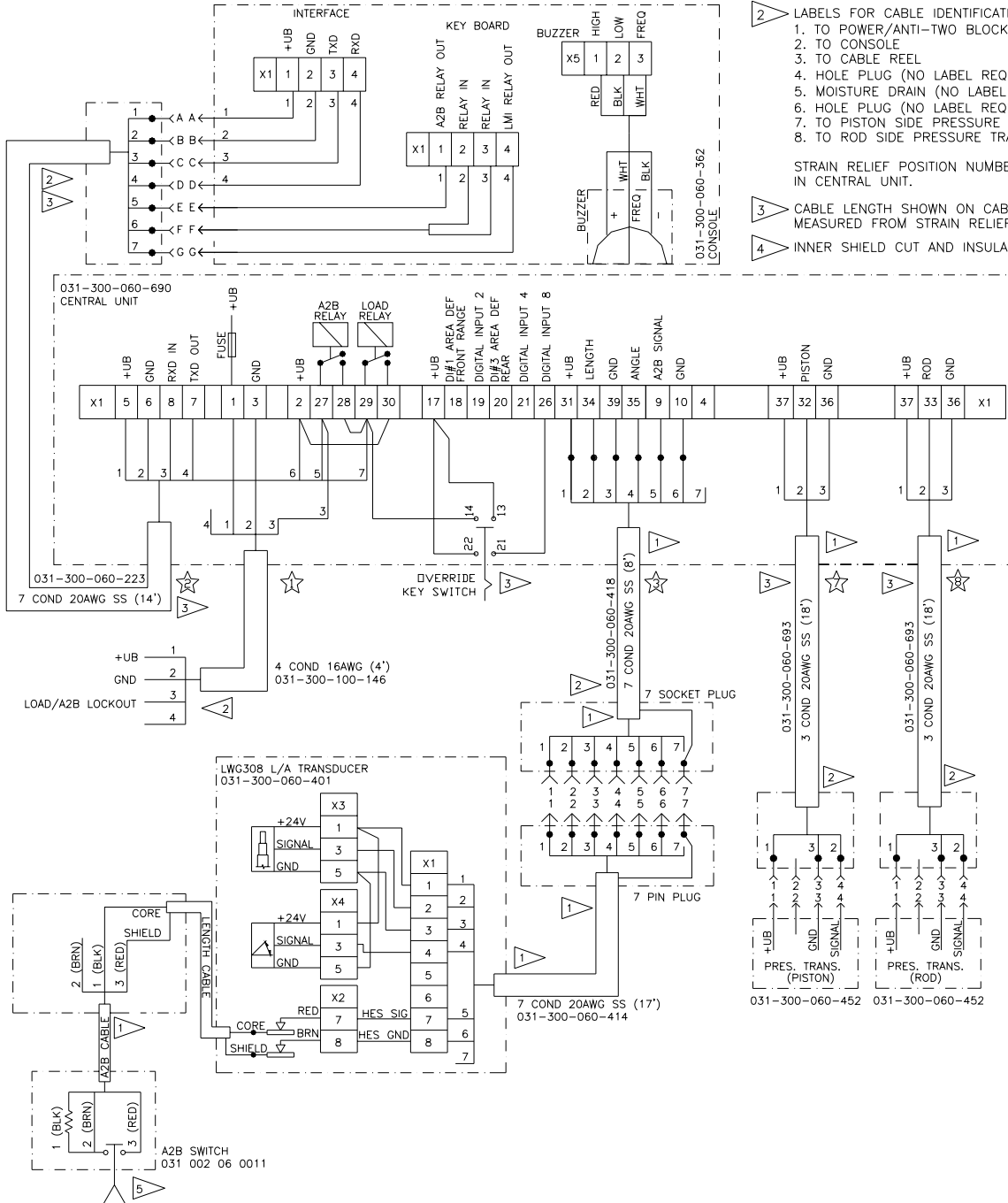
TAPE AND STOW ALL WIRES NOT CONNECTED

1 OUTER SHIELD CONNECTED TO STRAIN RELIEF INSERT

2 LABELS FOR CABLE IDENTIFICATION ARE AS FOLLOWS:
 1. TO POWER/ANTI-TWO BLOCK SWITCH
 2. TO CONSOLE
 3. TO CABLE REEL
 4. HOLE PLUG (NO LABEL REQUIRED)
 5. MOISTURE DRAIN (NO LABEL REQUIRED)
 6. HOLE PLUG (NO LABEL REQUIRED)
 7. TO PISTON SIDE PRESSURE TRANSDUCER
 8. TO ROD SIDE PRESSURE TRANSDUCER

STRAIN RELIEF POSITION NUMBER REFERENCE POSITION IN CENTRAL UNIT.

3 CABLE LENGTH SHOWN ON CABLE ASSEMBLIES ARE MEASURED FROM STRAIN RELIEF TO STRAIN RELIEF.
 4 INNER SHIELD CUT AND INSULATED.



PAT HIRSCHMANN DS160 WIRING SCHEMATIC - 3

031-300-060-645 Central Unit

NOTES:

TAPE AND STOW ALL WIRES NOT CONNECTED

- 1 SHIELD CONNECTED TO STRAIN RELIEF INSERT
- 2 LABELS FOR CABLE IDENTIFICATION ARE AS FOLLOWS:
 - 1. TO POWER/ANTI-TWO BLOCK SWITCH
 - 2. TO CONSOLE
 - 3. TO CABLE REEL
 - 4. HOLE PLUG (NO LABEL REQUIRED)
 - 5. MOISTURE DRAIN (NO LABEL REQUIRED)
 - 6. HOLE PLUG (NO LABEL REQUIRED)
 - 7. TO PISTON SIDE PRESSURE TRANSDUCER
 - 8. TO ROD SIDE PRESSURE TRANSDUCER
- 3 CABLE LENGTH SHOWN ON CABLE ASSEMBLIES ARE MEASURED FROM STRAIN RELIEF TO STRAIN RELIEF.
- 4 INNER SHIELD CUT AND INSULATED.
- 5 SHIELD INSULATED AND CONNECTED AS SHOWN.

